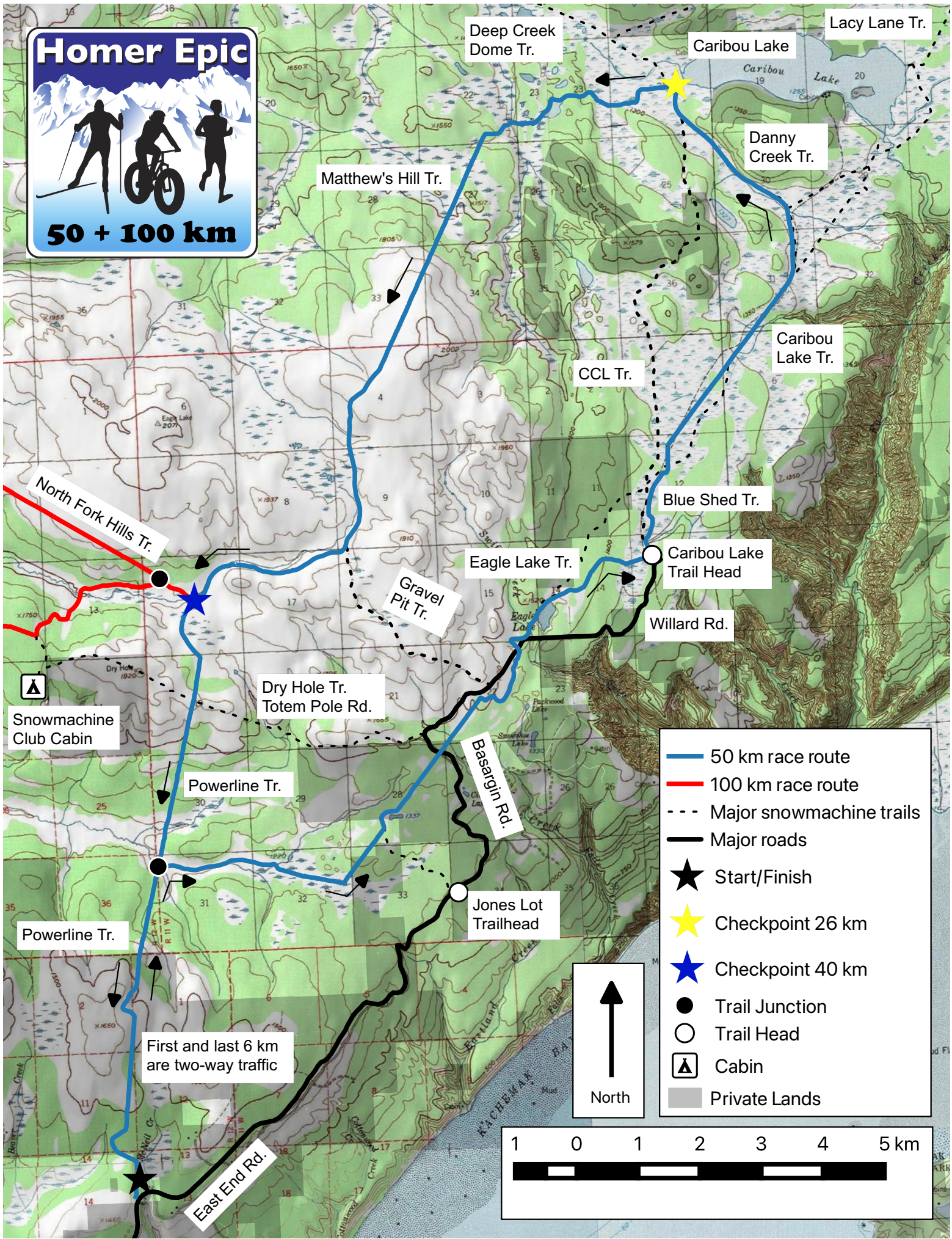


Homer Epic

50 + 100 km



Deep Creek Dome Tr.

Caribou Lake

Lacy Lane Tr.

Matthew's Hill Tr.

Danny Creek Tr.

Caribou Lake Tr.

CCL Tr.

Blue Shed Tr.

Eagle Lake Tr.

Caribou Lake Trail Head

Willard Rd.

Gravel Pit Tr.

Dry Hole Tr.
Totem Pole Rd.

Basargin Rd.

Jones Lot Trailhead

Powerline Tr.

Powerline Tr.

First and last 6 km are two-way traffic

East End Rd.

- 50 km race route
- 100 km race route
- - - Major snowmachine trails
- Major roads
- ★ Start/Finish
- ★ Checkpoint 26 km
- ★ Checkpoint 40 km
- Trail Junction
- Trail Head
- ▲ Cabin
- Private Lands

